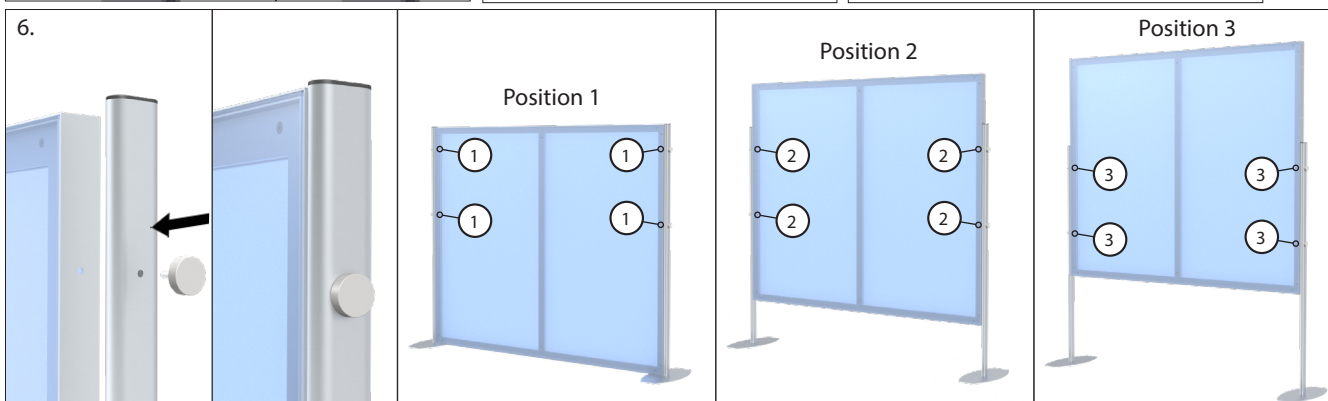
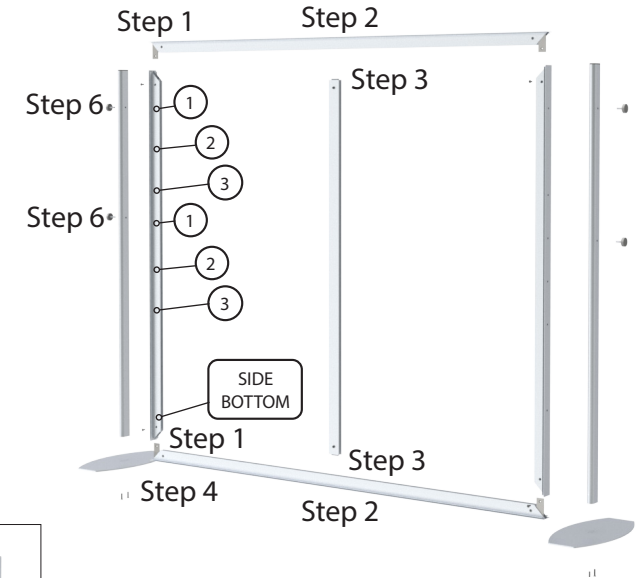
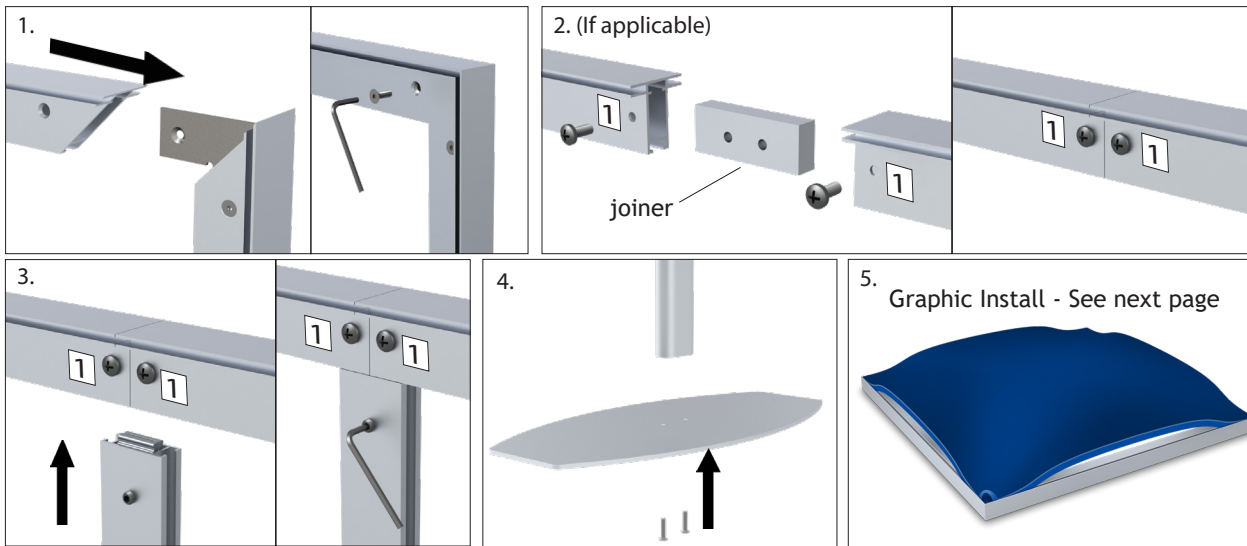


# Charisma™ SEG Stand - XSS Custom Adjustable Series

The frame pieces with a **SIDE BOTTOM** sticker and circled number stickers ①, ②, ③ are the vertical sides of the frame. The horizontal sides of the frame will not have any stickers, unless the horizontal sides are split in two sections. Each two-section horizontal side will have matching rectangular number stickers, 1 and 1, 2 and 2, etc., at the joining point.

1. For each frame corner, align the holes of bracket with the holes on the frame and lightly tighten using the small Allen screws provided. Repeat for all four sides of the frame. Once completed, go back and fully tighten all the screws.
2. *If applicable*, place frame joiner in between the horizontal frame halves. Align frame holes with joiner holes and use the screws provided to secure.
3. Place center support bar bracket into frame channel and use an Allen key to expand the bracket inside the channel to secure it in place.
4. Align uprights with base holes and attach using the large flat head Allen screws provided. When inserting screws, tighten BOTH by hand first. Then, fully tighten using an Allen key.
5. Install the graphic per the instructions on page 2.
6. **Mounting the frame:** Orient the frame with the **SIDE BOTTOM** stickers pointing to the ground. The frame has mounting holes at three height positions indicated by the circled number stickers ①, ② and ③. Attach the four puck screws provided, through the uprights and fasten the puck screws to the four holes on the frame, matching the desired height position.



# Charisma™ SEG Stand - XSS Custom Adjustable Series

1. To install the graphic, take the corner with the pull tag on it and press about 6"-10" of silicone into the frame channel corner A. Repeat for the opposite corner B. Repeat for the next corner C. Lastly, repeat for the final corner D.
2. After all corners are pressed in, press the silicone into the frame channel at the mid-points on all four sides.
3. Press silicone into frame evenly between the corner and midpoints.  
This prevents the graphic from bunching up or stretching too much and will ensure a smooth and tight fit.
4. To remove the graphic from the frame, simply pull up on the pull tag.
5. Repeat steps 2-4 on the second side, if applicable.

